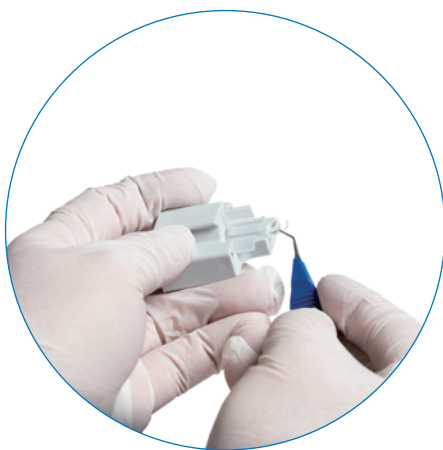


NAVIJECT™

装载轻松，囊括无限——智捷之选



- 极高性价比，可提供理想解决方案
- 特有辅助装载系统，帮助人工晶体轻松装载
- 适用于任何一片式人工晶体

装载轻松，囊括无限——智捷之选

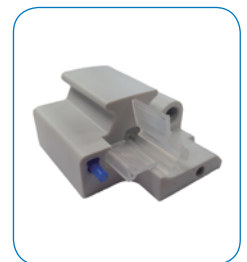
NAVIJECT™系列的晶体装载轻松简便，医护人员可以在几秒钟内顺利完成。飞机夹头的巧妙设计可以保证人工晶体在飞机夹头中准确定位装载，从而让晶体轻松顺利地植入到患者眼中。

NAVIJECT™系列的晶体植入系统能确保植入过程安全可控，从而确保晶体有效地植入眼内。再也不用担心晶体卡顿，划伤或损坏等等并发症的发生了。NAVIJECT™系列的晶体植入系统最大化了晶体植入的安全性，从而极大地提高了手术效率。

NAVIJECT™ INJECTOR SET WITH LOADING UNIT, STERILE (BOX OF 10)

LP604415 NAVIJECT™ 2.7-1P Injector-Set
for 1-piece lenses for incision sizes of sub 2.8 mm

LP604425 NAVIJECT™ 2.2-1P Injector-Set
for 1-piece lenses for incision sizes of sub 2.5 mm



NAVIJECT™ INJECTOR SET WITHOUT LOADING UNIT, STERILE (BOX OF 10)

LP604415W NAVIJECT™ 2.7-1P Injector-Set
for 1-piece lenses for incision sizes of sub 2.8 mm

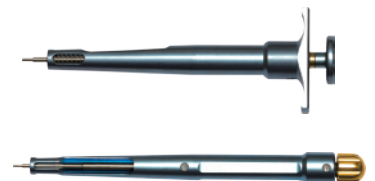
LP604425W NAVIJECT™ 2.2-1P Injector-Set
for 1-piece lenses for incision sizes of sub 2.5 mm



NAVIJECT™ MULTIPLE-USE INJECTORS, SYRINGE -AND SCREW-TYPE

LI604305 NAVIJECT™ Injector, Syringe-Type „ATRAUMATIC“

LI604315 NAVIJECT™ Injector, Screw-Type „ATRAUMATIC“



NAVIJECT™ CARTRIDGE SET, STERILE (BOX OF 10)

LC604315 NAVIJECT™ 2.7-1P CARTRIDGE SET

LP604425 NAVIJECT™ 2.2-1P CARTRIDGE SET



Medical AG

Dornierstrasse 11 CH-9423 Altenrhein SWITZERLAND

Tel. +41 71 727 10 50 Fax +41 71 727 10 55

info@medicel.com www.medicel.com

Medical 中国代表处

地址：北京市东城区南竹杆胡同2号1幢，银河SOHO，C座31011室

邮编：100010

电话：+86 10 85932359

邮箱：coral.zhong@medicel.com

网址：www.medicel.com

medicel
SWISS TECHNOLOGY FOR SURGERY